

HERON'S BAY OF CAROLINE

SITUATED IN THE
NORTHWEST 1/4 OF
SECTION 11, TOWNSHIP 8 NORTH -
RANGE 1 EAST
MADISON COUNTY, MISSISSIPPI

PLATTED & SURVEYED BY
H D LANG AND ASSOCIATES, INC.
ENGINEERS / LAND SURVEYORS
4099 NORTH STATE STREET
JACKSON, MISSISSIPPI
(601) 362-4886

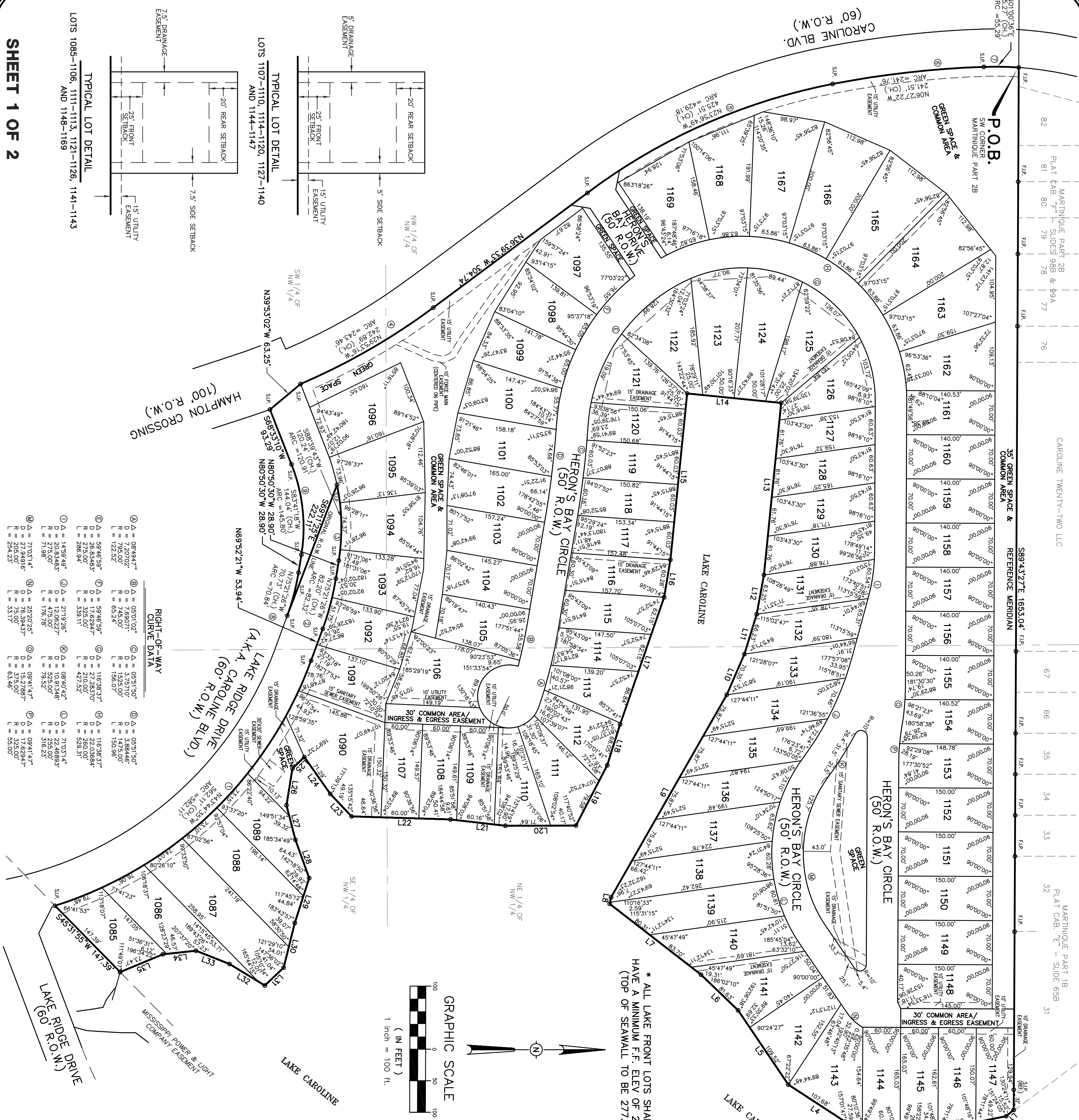
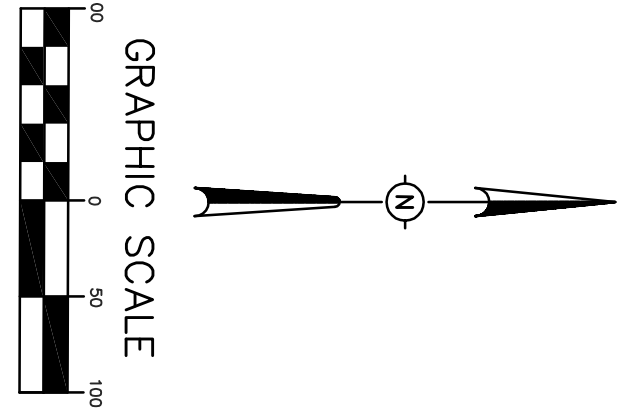
BOUNDARY INFORMATION

NUMBER	DIRECTION	DISTANCE
L1	S40°07'38"E	15.52'
L2	S17°31'43"E	14.475'
L3	S10°05'57"W	11.5.37'
L4	S33°04'10"W	107.66'
L5	S55°57'00"W	142.21'
L6	S43°50'22"W	81.63'
L7	S37°48'12"W	183.32'
L8	N77°43'03"W	10.55'
L9	N60°15'26"W	369.90'
L10	N66°31'50"W	70.35'
L11	N72°56'50"W	66.23'
L12	N79°32'48"W	63.25'
L13	N84°16'07"W	274.20'
L14	S05°43'53"W	150.00'
L15	S84°16'07"E	265.11'
L16	S80°30'08"E	60.28'
L17	S70°53'19"E	213.35'
L18	S72°32'05"E	68.05'
L19	S62°32'05"E	110.51'
L20	S00°12'57"E	11.87'
L21	S06°32'45"W	87.67'
L22	S01°47'46"W	157.06'
L23	S46°52'04"W	49.19'
L24	S54°52'51"W	71.29'
L25	S43°52'03"E	26.15'
L26	S80°48'08"E	59.03'
L27	N75°40'21"E	56.70'
L28	N70°05'33"E	64.43'
L29	S72°13'17"E	74.75'
L30	S75°57'15"E	73.09'
L31	S43°33'17"E	41.04'
L32	S31°6'10"W	65.72'
L33	S27°32'44"W	57.23'
L34	S06°04'35"E	52.69'
L35	S22°58'58"E	73.47'

BOUNDARY CURVE DATA

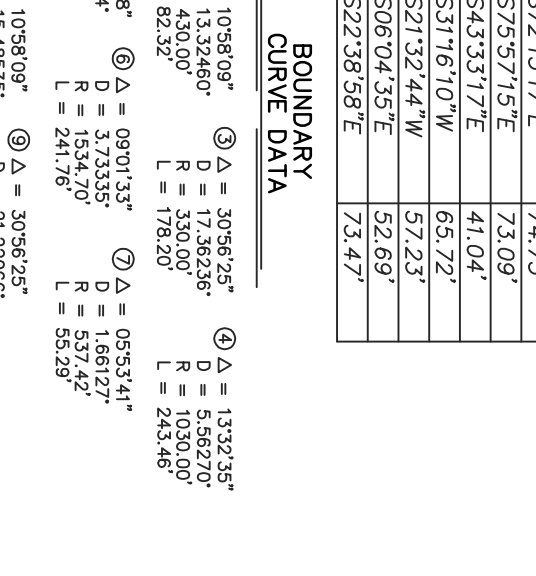
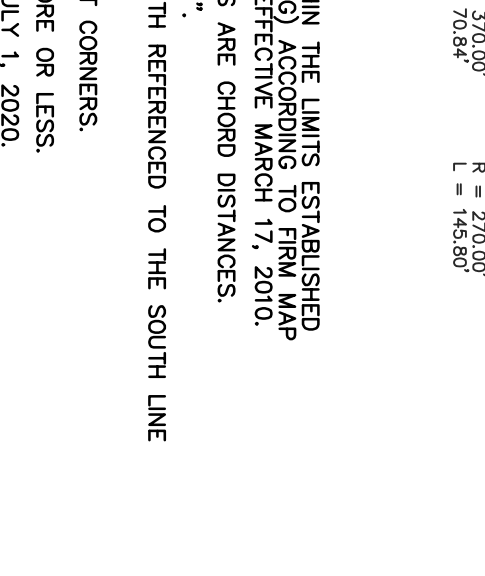
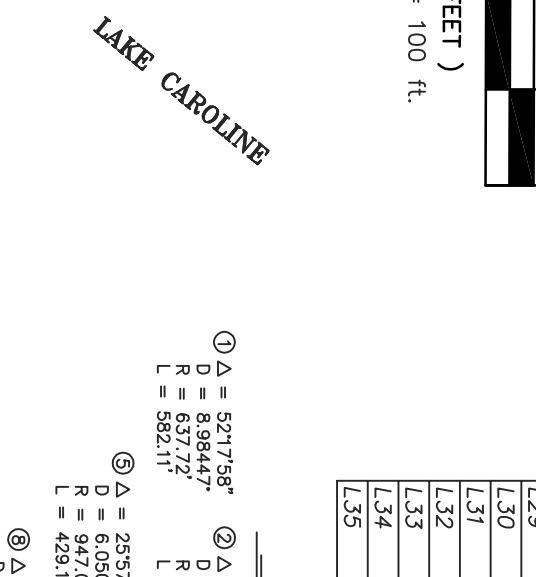
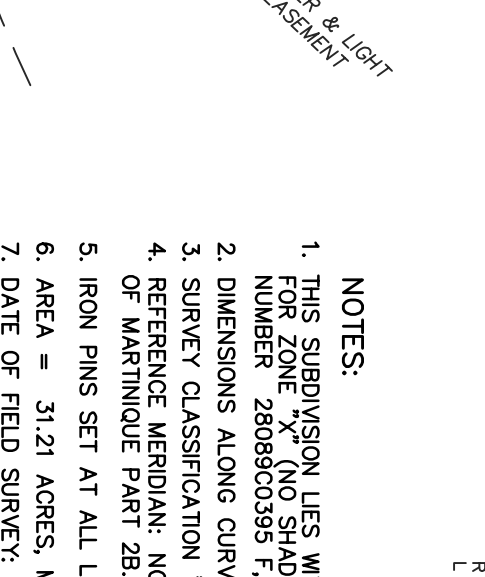
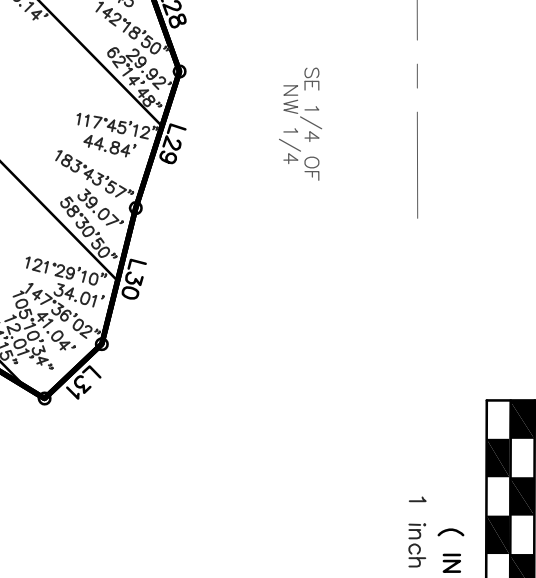
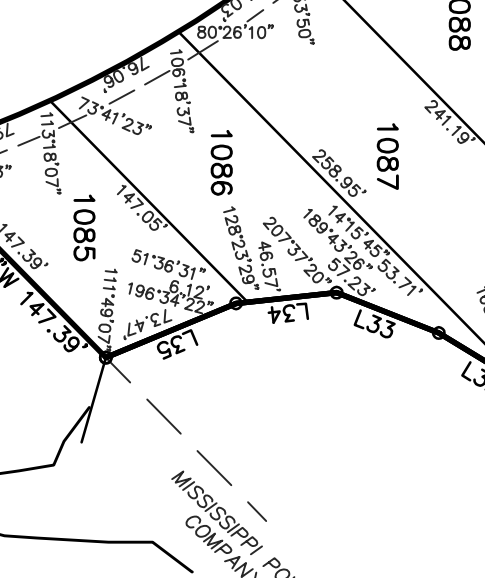
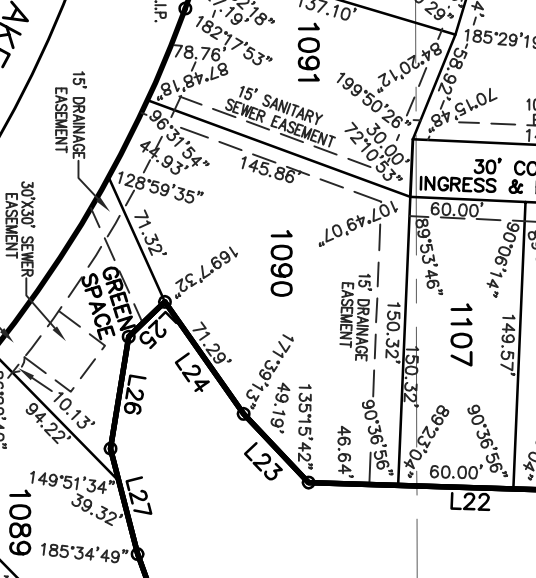
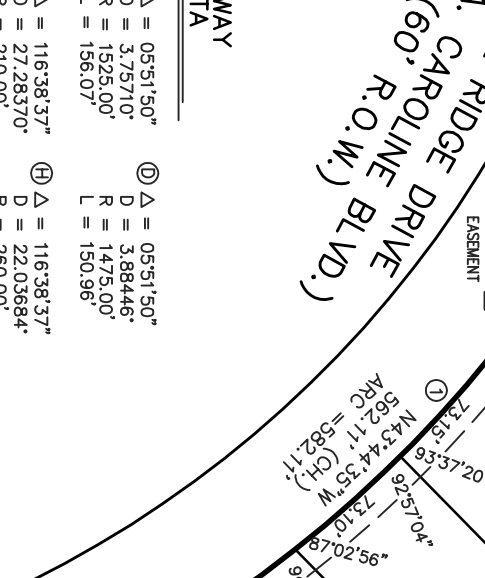
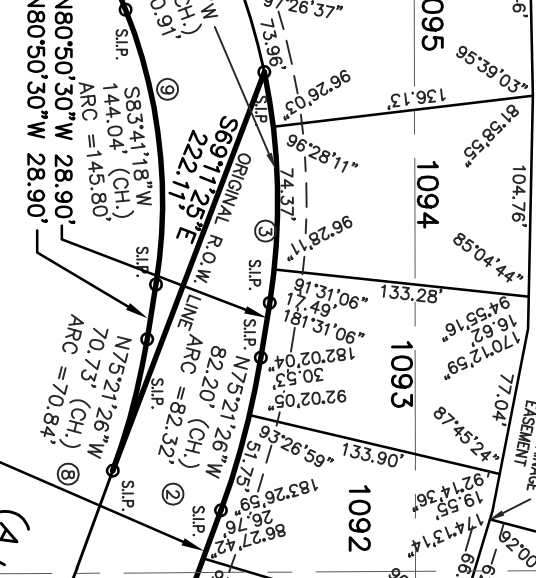
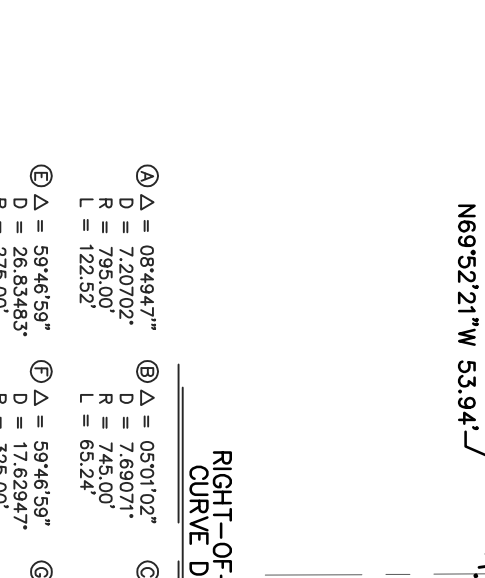
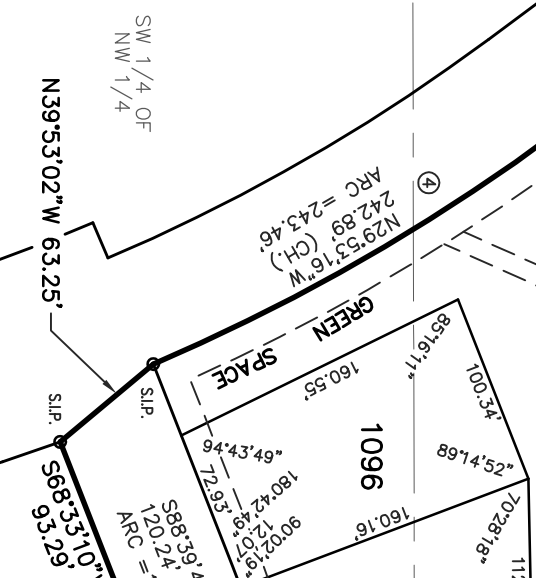
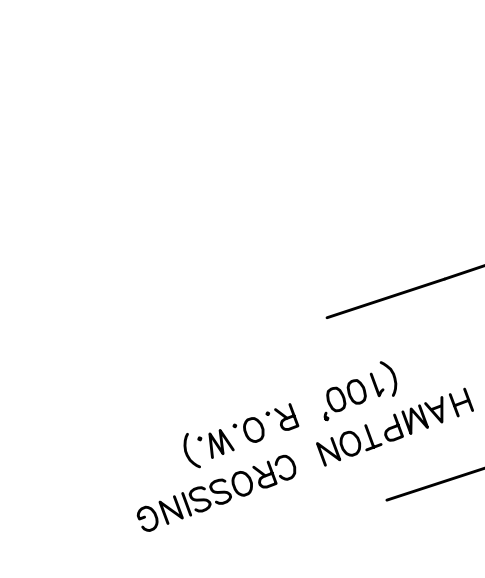
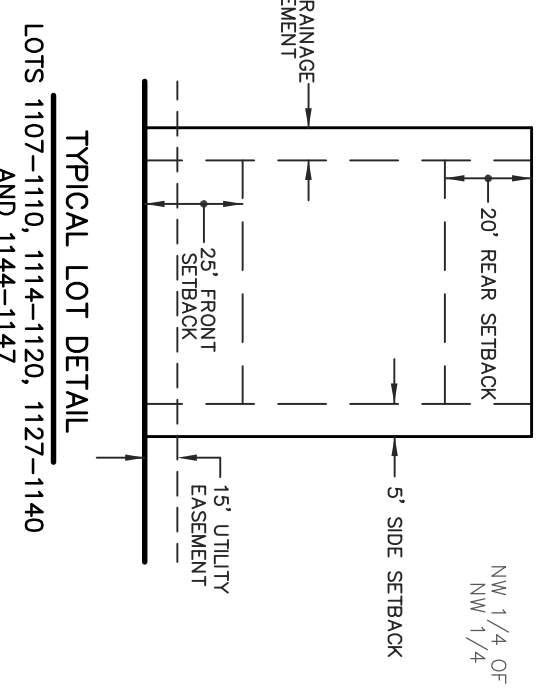
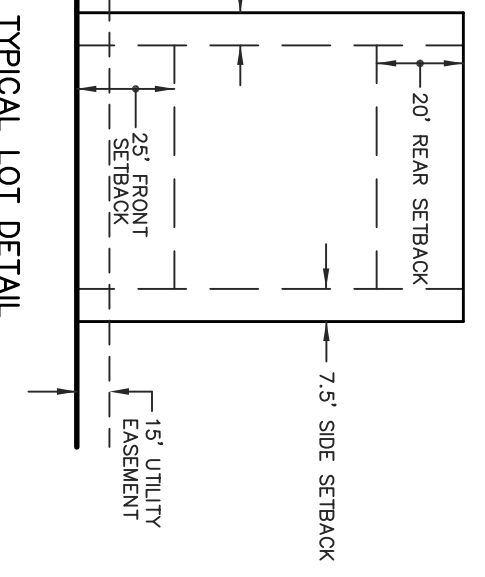
① Δ = 52°17'98"	② Δ = 10°58'09"	③ Δ = 30°56'28"	④ Δ = 13°32'35"
D = 8.98447'	D = 13.32468'	D = 17.36226'	D = 5.586270'
R = 537.77'	R = 80.000'	R = 330.000'	R = 103.000'
R = 537.77'	R = 80.000'	R = 330.000'	R = 103.000'
⑤ Δ = 28°59'58"	⑥ Δ = 09°01'33"	⑦ Δ = 05°53'41"	
D = 6.09024'	D = 3.73335'	D = 1.68127'	
R = 429.18'	R = 241.76'	R = 55.29'	
⑧ Δ = 10°58'09"	⑨ Δ = 30°56'28"		
D = 15.48535'	D = 21.22066'		
R = 70.84'	R = 149.80'		

* ALL LAKE FRONT LOTS SHALL
HAVE A MINIMUM F.F. ELEV OF 279.0
(TOP OF SEAWALL TO BE 277.5)



LOTS 1085-1106, 1111-1113, 1121-1126, 1141-1143
AND 1148-1169

SHEET 1 OF 2



- NOTES:
- THIS SUBDIVISION LIES WITHIN THE LIMITS ESTABLISHED FOR ZONE "X" (NO SHADING) ACCORDING TO FIRM MAP NUMBER 28089C0395 F, EFFECTIVE MARCH 17, 2010.
 - DIMENSIONS ALONG CURVES ARE CHORD DISTANCES.
 - SURVEY CLASSIFICATION "B".
 - REFERENCE MERIDIAN: NORTH REFERENCED TO THE SOUTH LINE OF MARTINIQUE PART 2B.
 - IRON PINS SET AT ALL LOT CORNERS.
 - AREA = 31.21 ACRES, MORE OR LESS.
 - DATE OF FIELD SURVEY: JULY 1, 2020.
 - DATE OF PREPARATION OF PLAT: MAY 21, 2021.
 - COMMON AREAS AND EASEMENTS SHALL BE MAINTAINED BY THE HOME OWNERS ASSN. OR ADJACENT LOT OWNER, WHICHEVER IS APPLICABLE AS OUTLINED IN THE COVENANTS.
- F.I.P. DENOTES FOUND 1/2" IRON PIN
S.I.P. DENOTES SET 1/2" IRON PIN
* SET 1/2" IRON PINS ALONG LAKE ARE SET ON A 20 FOOT OFFSET