

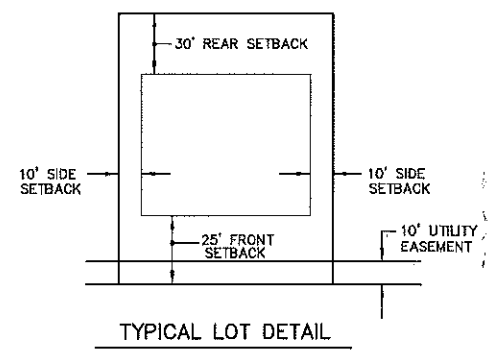
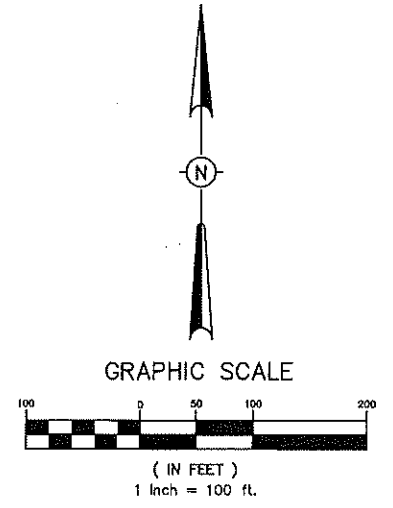
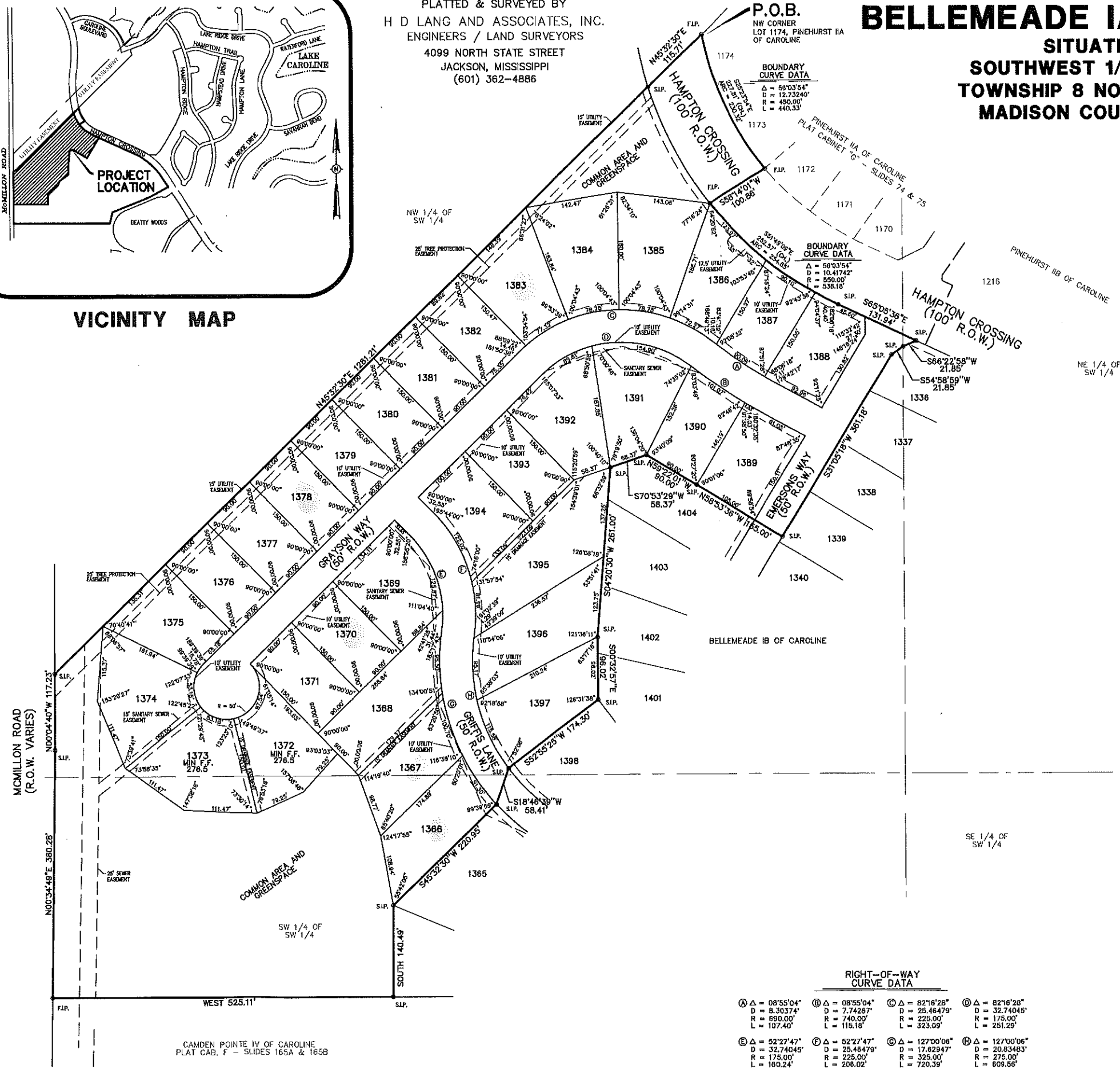
VICINITY MAP

PLATTED & SURVEYED BY
 H D LANG AND ASSOCIATES, INC.
 ENGINEERS / LAND SURVEYORS
 4099 NORTH STATE STREET
 JACKSON, MISSISSIPPI
 (601) 362-4886

BELLEMEADE IA OF CAROLINE

SITUATED IN THE
 SOUTHWEST 1/4 OF SECTION 11,
 TOWNSHIP 8 NORTH - RANGE 1 EAST
 MADISON COUNTY, MISSISSIPPI

P.O.B.
 NW CORNER
 LOT 1174, PINEHURST IIA
 OF CAROLINE



NOT RECORDED

RIGHT-OF-WAY CURVE DATA			
Ⓐ Δ = 08°55'04"	Ⓑ Δ = 08°55'04"	Ⓒ Δ = 82°16'28"	Ⓓ Δ = 82°16'28"
D = 8.30374'	D = 7.74287'	D = 25.46479'	D = 32.74045'
R = 690.00'	R = 740.00'	R = 225.00'	R = 175.00'
L = 107.40'	L = 115.18'	L = 323.09'	L = 251.29'
Ⓔ Δ = 52°27'47"	Ⓕ Δ = 52°27'47"	Ⓖ Δ = 127°00'08"	Ⓗ Δ = 127°00'06"
D = 32.74045'	D = 25.46479'	D = 17.82947'	D = 20.83483'
R = 175.00'	R = 225.00'	R = 325.00'	R = 275.00'
L = 160.24'	L = 208.02'	L = 720.39'	L = 609.55'

- NOTES:
- THIS SUBDIVISION LIES WITHIN THE LIMITS ESTABLISHED FOR ZONE "X" (NO SHADING) ACCORDING TO FIRM MAP NUMBER 28089C0395 F, EFFECTIVE MARCH 17, 2010.
 - DIMENSIONS ALONG CURVES ARE CHORD DISTANCES.
 - SURVEY CLASSIFICATION "B".
 - REFERENCE MERIDIAN: NORTH REFERENCED TO THE WEST LINE OF PINEHURST I OF CAROLINE
 - IRON PINS SET AT ALL LOT CORNERS.
 - AREA = 19.76 ACRES, MORE OR LESS.
 - DATE OF FIELD SURVEY: JULY 1, 2022.
 - DATE OF PREPARATION OF PLAT: MAY 19, 2023.
 - COMMON AREAS AND EASEMENTS SHALL BE MAINTAINED BY THE HOME OWNERS ASSN. OR ADJACENT LOT OWNER, WHICHEVER IS APPLICABLE AS OUTLINED IN THE COVENANTS.

F.I.P. DENOTES FOUND 1/2" IRON PIN
 S.I.P. DENOTES SET 1/2" IRON PIN