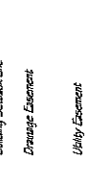
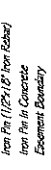


# AUTUMN CREST

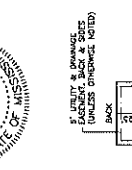
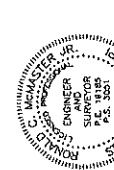
SITUATED IN SW 1/4 OF SECTION 18, T8N-R2E,  
MADISON COUNTY, MISSISSIPPI  
439 F. 1874

Class of Survey  
Bearings Based on Survey Grade  
GPS Observations from On  
September 7, 2016  
(Geomatics Note)  
Our Job No. M-2729-FW/PA  
Date of Survey July 6, 2021  
Date of Plot September 27, 2021  
Scale 1" = 100' Bearing  
PCD - Point of Commencement  
Iron Pin (1/2" x 18" Iron Rod)  
Iron Pin in Concrete  
Easement Boundary  
Building Setback Line  
Drainage Easement  
Utility Easement



NOTES:

- This is to certify that this property is situated in the SW 1/4 of Section 18, T8N-R2E, Madison County, Mississippi, as shown on the plat filed for record on March 17, 2010.
- The survey was conducted in accordance with the requirements for a Class 1 Survey.
- All Common Areas and Drainage Easements shall be maintained by the Homeowner's Association or other appropriate entity.
- There is a ten (10) foot wide drainage and utility easement along all street rights-of-way. There is a five (5) foot wide drainage and utility easement along the side and rear lines of each lot, unless otherwise noted.
- No building may be constructed within any drainage easement.
- The individual lot owner/homeowner is responsible for additional drainage improvements (i.e. catch basins, storm pipe, french drains, etc.) needed to facilitate drainage from the lot.
- A road grade shall be constructed down each lot line and shall be a minimum depth of 18" below the finished floor elevation of the home. All surface drainage shall be directed to these swales and away from the home.
- The subject property includes the prior R.O.W. for the 10' utility easement shown on the County Board of Supervisors in Session on September 28, 2011.



MAIL-IN-CURB ELEVATION TABLE

MAIL NO.	ELEVATION
MAIL-1	322.36'
MAIL-2	322.35'
MAIL-3	322.48'
MAIL-4	316.91'
MAIL-5	330.98'
MAIL-6	326.21'

POINT OF COMMENCEMENT found at the SW Corner of Section 18, T8N-R2E, Madison County, Mississippi.

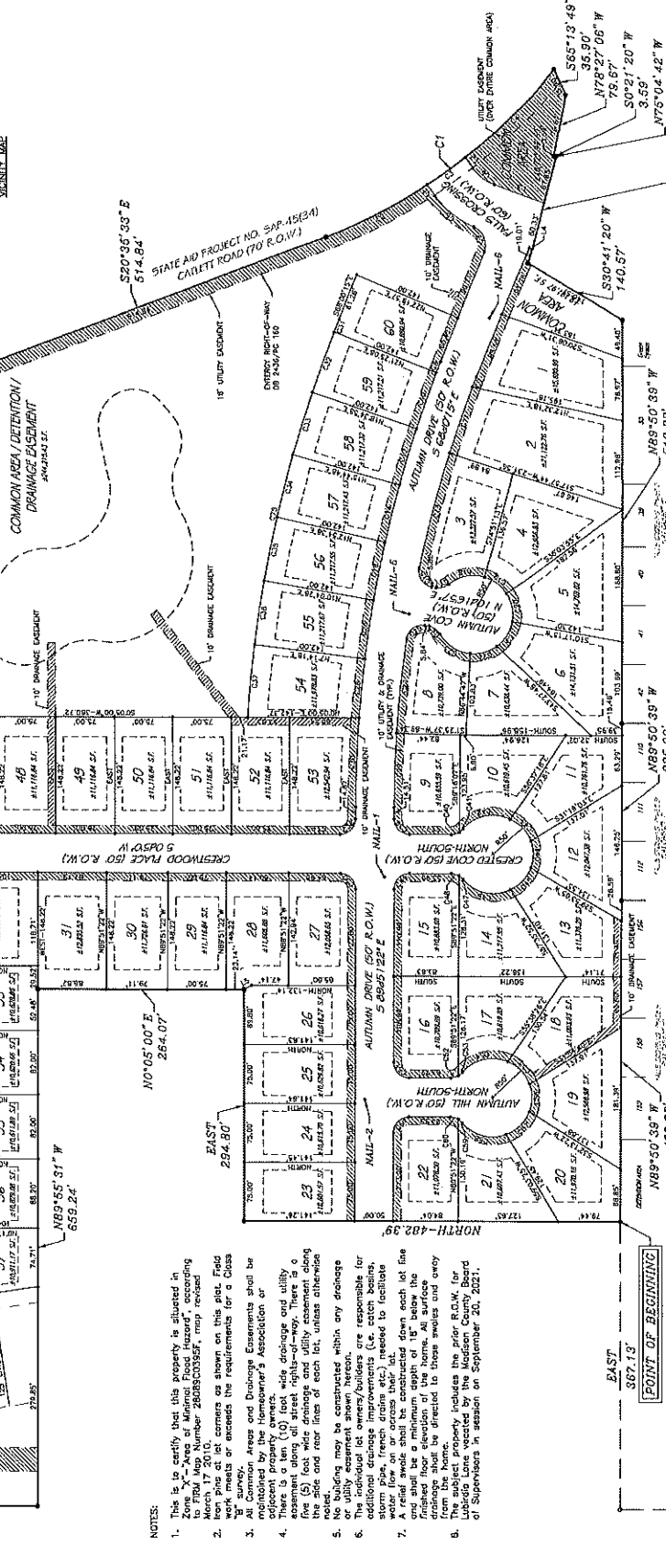
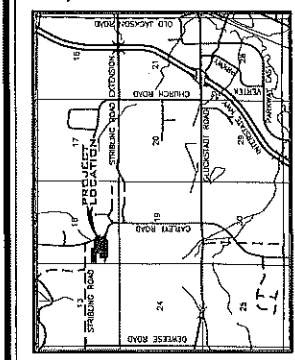
MAIL-IN-CURB ELEVATION TABLE

Curve #	Length	Radius	Delta	Chord	Direction	Chord Length
C1	367.13'	974.82'	3.12°	359.15'	171°	363.83'
C2	147.23'	871.81'	15.59°	129.44'	187°	147.23'
C3	69.22'	671.82'	5.17°	62.97'	187°	69.22'
C4	79.64'	971.62'	13.62°	74.93'	193.26°	79.64'
C5	84.24'	1393.00'	3.87°	82.41'	174°	84.24'
C6	34.74'	2500.00'	3.17°	33.74'	174°	34.74'
C7	38.88'	2500.00'	3.64°	37.49'	174°	38.88'
C8	14.28'	1472.00'	0.57°	14.07'	174°	14.28'
C9	14.28'	1472.00'	0.57°	14.07'	174°	14.28'
C10	74.48'	1472.00'	3.48°	72.30'	174°	74.48'
C11	89.15'	1472.00'	4.10°	86.37'	174°	89.15'
C12	72.48'	1472.00'	3.42°	70.29'	174°	72.48'
C13	159.26'	1472.00'	7.24°	154.30'	174°	159.26'
C14	72.48'	1472.00'	3.42°	70.29'	174°	72.48'
C15	32.24'	2019.00'	1.70°	31.70'	174°	32.24'
C16	72.48'	1472.00'	3.42°	70.29'	174°	72.48'
C17	12.48'	780.00'	0.48°	12.30'	174°	12.48'
C18	46.37'	530.00'	1.63°	45.57'	174°	46.37'
C19	39.57'	530.00'	1.35°	38.77'	174°	39.57'
C20	37.48'	530.00'	1.28°	36.68'	174°	37.48'
C21	37.48'	530.00'	1.28°	36.68'	174°	37.48'
C22	37.48'	530.00'	1.28°	36.68'	174°	37.48'
C23	46.44'	530.00'	1.63°	45.64'	174°	46.44'
C24	17.45'	2000.00'	0.69°	17.15'	174°	17.45'
C25	22.03'	2000.00'	0.88°	21.53'	174°	22.03'

Sections 18, 19, 24

Section 13

Section 24



Curve Data Table

Curve #	Length	Radius	Delta	Chord	Direction	Chord Length
C1	31.47'	2000.00'	86.14°	549.34'	19°	283.22'
C2	10.54'	2000.00'	28.22°	515.05'	40°	10.54'
C3	6.96'	2000.00'	18.77°	549.05'	31°	6.96'
C4	64.45'	5000.00'	72.71°	813.30'	20°	95.26'
C5	40.05'	5000.00'	44.53°	849.10'	37°	37.82'
C6	35.75'	5000.00'	40.64°	859.57'	27°	34.37'
C7	42.54'	5000.00'	48.21°	844.49'	04°	41.84'
C8	61.27'	5000.00'	70.51°	814.53'	28°	67.31'
C9	63.30'	5000.00'	73.58°	807.12'	28°	67.31'
C10	16.82'	2000.00'	30.44°	815.13'	07°	16.82'
C11	31.37'	2000.00'	60.88°	844.55'	47°	28.25'
C12	35.31'	2500.00'	67.05°	826.37'	30°	35.31'
C13	14.83'	2000.00'	23.31°	817.30°	14°	14.83'
C14	18.60'	2000.00'	27.31°	817.30°	14°	18.60'
C15	41.82'	5000.00'	62.57°	866.31'	27°	45.84'
C16	41.82'	5000.00'	62.57°	866.31'	27°	45.84'
C17	17.45'	2000.00'	6.93°	859.44'	04°	17.45'
C18	17.45'	2000.00'	6.93°	859.44'	04°	17.45'
C19	56.01'	5000.00'	33.07°	837.27'	25°	58.15'
C20	56.01'	5000.00'	33.07°	837.27'	25°	58.15'
C21	24.51'	2000.00'	10.07°	807.34'	34°	24.49'
C22	17.45'	2000.00'	6.93°	859.44'	04°	17.45'
C23	22.03'	1672.00'	11.25°	859.44'	04°	22.03'

Curve Data Table

Curve #	Length	Radius	Delta	Chord	Direction	Chord Length
C24	74.48'	1472.00'	3.42°	72.30'	174°	74.48'
C25	89.15'	1472.00'	4.10°	86.37'	174°	89.15'
C26	72.48'	1472.00'	3.42°	70.29'	174°	72.48'
C27	159.26'	1472.00'	7.24°	154.30'	174°	159.26'
C28	72.48'	1472.00'	3.42°	70.29'	174°	72.48'
C29	32.24'	2019.00'	1.70°	31.70'	174°	32.24'
C30	72.48'	1472.00'	3.42°	70.29'	174°	72.48'
C31	12.48'	780.00'	0.48°	12.30'	174°	12.48'
C32	46.37'	530.00'	1.63°	45.57'	174°	46.37'
C33	39.57'	530.00'	1.35°	38.77'	174°	39.57'
C34	37.48'	530.00'	1.28°	36.68'	174°	37.48'
C35	37.48'	530.00'	1.28°	36.68'	174°	37.48'
C36	37.48'	530.00'	1.28°	36.68'	174°	37.48'
C37	46.44'	530.00'	1.63°	45.64'	174°	46.44'
C38	17.45'	2000.00'	0.69°	17.15'	174°	17.45'
C39	22.03'	2000.00'	0.88°	21.53'	174°	22.03'

Curve Data Table

Curve #	Length	Radius	Delta	Chord	Direction	Chord Length
C40	74.48'	1472.00'	3.42°	72.30'	174°	74.48'
C41	89.15'	1472.00'	4.10°	86.37'	174°	89.15'
C42	72.48'	1472.00'	3.42°	70.29'	174°	72.48'
C43	159.26'	1472.00'	7.24°	154.30'	174°	159.26'
C44	72.48'	1472.00'	3.42°	70.29'	174°	72.48'
C45	32.24'	2019.00'	1.70°	31.70'	174°	32.24'
C46	72.48'	1472.00'	3.42°	70.29'	174°	72.48'
C47	12.48'	780.00'	0.48°	12.30'	174°	12.48'
C48	46.37'	530.00'	1.63°	45.57'	174°	46.37'
C49	39.57'	530.00'	1.35°	38.77'	174°	39.57'
C50	37.48'	530.00'	1.28°	36.68'	174°	37.48'
C51	37.48'	530.00'	1.28°	36.68'	174°	37.48'
C52	37.48'	530.00'	1.28°	36.68'	174°	37.48'
C53	46.44'	530.00'	1.63°	45.64'	174°	46.44'
C54	17.45'	2000.00'	0.69°	17.15'	174°	17.45'
C55	22.03'	2000.00'	0.88°	21.53'	174°	22.03'

Curve Data Table

Curve #	Length	Radius	Delta	Chord	Direction	Chord Length
C56	74.48'	1472.00'	3.42°	72.30'	174°	74.48'
C57	89.15'	1472.00'	4.10°	86.37'	174°	89.15'
C58	72.48'	1472.00'	3.42°	70.29'	174°	72.48'
C59	159.26'	1472.00'	7.24°	154.30'	174°	159.26'
C60	72.48'	1472.00'	3.42°	70.29'	174°	72.48'
C61	32.24'	2019.00'	1.70°	31.70'	174°	32.24'
C62	72.48'	1472.00'	3.42°	70.29'	174°	72.48'
C63	12.48'	780.00'	0.48°	12.30'	174°	12.48'
C64	46.37'	530.00'	1.63°	45.57'	174°	46.37'
C65	39.57'	530.00'	1.35°	38.77'	174°	39.57'
C66	37.48'	530.00'	1.28°	36.68'	174°	37.48'
C67	37.48'	530.00'	1.28°	36.68'	174°	37.48'
C68	37.48'	530.00'	1.28°	36.68'	174°	37.48'
C69	46.44'	530.00'	1.63°	45.64'	174°	46.44'
C70	17.45'	2000.00'	0.69°	17.15'	174°	17.45'
C71	22.03'	2000.00'	0.88°	21.53'	174°	22.03'

Curve Data Table

Curve #	Length	Radius	Delta	Chord	Direction	Chord Length
C72	74.48'	1472.00'	3.42°	72.30'	174°	74.48'
C73	89.15'	1472.00'	4.10°	86.37'	174°	89.15'
C74	72.48'	1472.00'	3.42°	70.29'	174°	72.48'
C75	159.26'	1472.00'	7.24°	154.30'	174°	159.26'
C76	72.48'	1472.00'	3.42°	70.29'	174°	72.48'
C77	32.24'	2019.00'	1.70°	31.70'	174°	32.24'
C78	72.48'	1472.00'	3.42°	70.29'	174°	72.48'
C79	12.48'	780.00'	0.48°	12.30'	174°	12.48'
C80	46.37'	530.00'	1.63°	45.57'	174°	46.37'
C81	39.57'	530.00'	1.35°	38.77'	174°	39.57'
C82	37.48'	530.00'	1.28°	36.68'	174°	37.48'
C83	37.48'	530.00'	1.28°	36.68'	174°	37.48'
C84	37.48'	530.00'	1.28°	36.68'	174°	37.48'
C85	46.44'	530.00'	1.63°	45.64'	174°	46.44'
C86	17.45'	2000.00'	0.69°	17.15'	174°	17.45'
C87	22.03'	2000.00'	0.88°	21.53'	174°	22.03'

