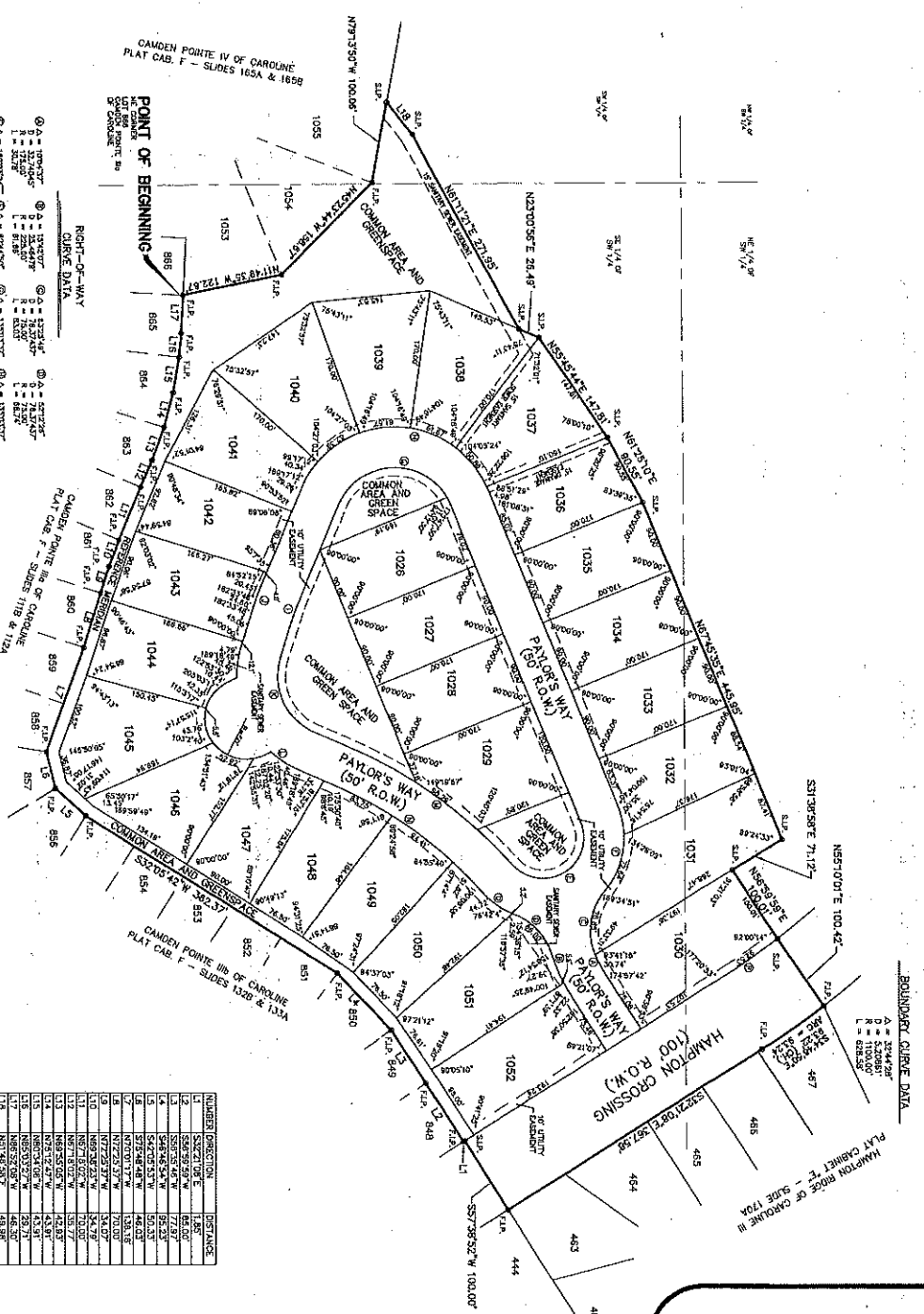


- NOTES:
1. THIS SUBDIVISION LIES WITHIN THE LIMITS ESTABLISHED FOR ZONE "X" (100' STATION) ACCORDING TO THE MAP NUMBER 2008000395 F. EFFECTIVE MARCH 17, 2010.
  2. DIMENSIONS ALONG CURVES ARE CHORD DISTANCES.
  3. SURVEY CLASSIFICATION: "S".
  4. REFERENCE MERIDIAN: NORTH REFERENCED TO THE NORTH LINE OF CAMDEN POINTE III OF CAROLINE.
  5. IRON PINS SET AT ALL LOT CORNERS.
  6. AREA = 16.51 ACRES, MORE OR LESS.
  7. DATE OF FIELD SURVEY: JULY 1, 2020.
  8. DATE OF PREPARATION OF PLAT: NOVEMBER 4, 2020.
  9. COMMON AREAS AND EASEMENTS SHALL BE MAINTAINED BY THE HOME OWNERS ASSN. OR ADJACENT LOT OWNER, WHICHEVER IS APPLICABLE AS OUTLINED IN THE COVENANTS.
- FLIP DENOTES FOUND 1/2" IRON PIN  
SLIP DENOTES SET 1/2" IRON PIN

**BEATTY WOODS OF CAROLINE**  
 SITUATED IN THE  
**SECTION 11, TOWNSHIP 8 NORTH - RANGE 1 EAST**  
**MADISON COUNTY, MISSISSIPPI**

502 F-1734

PLATTED & SURVEYED BY  
**H D LANG AND ASSOCIATES, INC.**  
 ENGINEERS / LAND SURVEYORS  
 4028 NORTH STATE STREET  
 JACKSON, MISSISSIPPI



NUMBER	DIRECTION	DISTANCE
1	S26°21'09\" E	11.95'
2	S26°59'59\" W	85.00'
3	S87°35'46\" W	77.97'
4	S44°06'53\" W	50.23'
5	S72°48'48\" W	48.03'
6	S72°48'48\" W	48.03'
7	S70°01'17\" W	138.18'
8	N17°25'37\" W	54.79'
9	N69°18'23\" W	54.79'
10	N57°18'02\" W	70.00'
11	N87°18'02\" W	42.83'
12	N68°35'05\" W	42.83'
13	N72°15'47\" W	42.83'
14	N68°35'05\" W	42.83'
15	N57°18'02\" W	42.83'
16	N57°18'02\" W	42.83'
17	N57°18'02\" W	42.83'
18	N57°18'02\" W	42.83'
19	N57°18'02\" W	42.83'
20	N57°18'02\" W	42.83'
21	N57°18'02\" W	42.83'
22	N57°18'02\" W	42.83'
23	N57°18'02\" W	42.83'
24	N57°18'02\" W	42.83'
25	N57°18'02\" W	42.83'
26	N57°18'02\" W	42.83'
27	N57°18'02\" W	42.83'
28	N57°18'02\" W	42.83'
29	N57°18'02\" W	42.83'
30	N57°18'02\" W	42.83'
31	N57°18'02\" W	42.83'
32	N57°18'02\" W	42.83'
33	N57°18'02\" W	42.83'
34	N57°18'02\" W	42.83'
35	N57°18'02\" W	42.83'
36	N57°18'02\" W	42.83'
37	N57°18'02\" W	42.83'
38	N57°18'02\" W	42.83'
39	N57°18'02\" W	42.83'
40	N57°18'02\" W	42.83'
41	N57°18'02\" W	42.83'
42	N57°18'02\" W	42.83'
43	N57°18'02\" W	42.83'
44	N57°18'02\" W	42.83'
45	N57°18'02\" W	42.83'
46	N57°18'02\" W	42.83'
47	N57°18'02\" W	42.83'
48	N57°18'02\" W	42.83'
49	N57°18'02\" W	42.83'
50	N57°18'02\" W	42.83'
51	N57°18'02\" W	42.83'
52	N57°18'02\" W	42.83'
53	N57°18'02\" W	42.83'
54	N57°18'02\" W	42.83'
55	N57°18'02\" W	42.83'
56	N57°18'02\" W	42.83'
57	N57°18'02\" W	42.83'
58	N57°18'02\" W	42.83'
59	N57°18'02\" W	42.83'
60	N57°18'02\" W	42.83'
61	N57°18'02\" W	42.83'
62	N57°18'02\" W	42.83'
63	N57°18'02\" W	42.83'
64	N57°18'02\" W	42.83'
65	N57°18'02\" W	42.83'
66	N57°18'02\" W	42.83'
67	N57°18'02\" W	42.83'
68	N57°18'02\" W	42.83'
69	N57°18'02\" W	42.83'
70	N57°18'02\" W	42.83'
71	N57°18'02\" W	42.83'
72	N57°18'02\" W	42.83'
73	N57°18'02\" W	42.83'
74	N57°18'02\" W	42.83'
75	N57°18'02\" W	42.83'
76	N57°18'02\" W	42.83'
77	N57°18'02\" W	42.83'
78	N57°18'02\" W	42.83'
79	N57°18'02\" W	42.83'
80	N57°18'02\" W	42.83'
81	N57°18'02\" W	42.83'
82	N57°18'02\" W	42.83'
83	N57°18'02\" W	42.83'
84	N57°18'02\" W	42.83'
85	N57°18'02\" W	42.83'
86	N57°18'02\" W	42.83'
87	N57°18'02\" W	42.83'
88	N57°18'02\" W	42.83'
89	N57°18'02\" W	42.83'
90	N57°18'02\" W	42.83'
91	N57°18'02\" W	42.83'
92	N57°18'02\" W	42.83'
93	N57°18'02\" W	42.83'
94	N57°18'02\" W	42.83'
95	N57°18'02\" W	42.83'
96	N57°18'02\" W	42.83'
97	N57°18'02\" W	42.83'
98	N57°18'02\" W	42.83'
99	N57°18'02\" W	42.83'
100	N57°18'02\" W	42.83'
101	N57°18'02\" W	42.83'
102	N57°18'02\" W	42.83'
103	N57°18'02\" W	42.83'
104	N57°18'02\" W	42.83'
105	N57°18'02\" W	42.83'
106	N57°18'02\" W	42.83'
107	N57°18'02\" W	42.83'
108	N57°18'02\" W	42.83'
109	N57°18'02\" W	42.83'
110	N57°18'02\" W	42.83'
111	N57°18'02\" W	42.83'
112	N57°18'02\" W	42.83'
113	N57°18'02\" W	42.83'
114	N57°18'02\" W	42.83'
115	N57°18'02\" W	42.83'
116	N57°18'02\" W	42.83'
117	N57°18'02\" W	42.83'
118	N57°18'02\" W	42.83'
119	N57°18'02\" W	42.83'
120	N57°18'02\" W	42.83'
121	N57°18'02\" W	42.83'
122	N57°18'02\" W	42.83'
123	N57°18'02\" W	42.83'
124	N57°18'02\" W	42.83'
125	N57°18'02\" W	42.83'
126	N57°18'02\" W	42.83'
127	N57°18'02\" W	42.83'
128	N57°18'02\" W	42.83'
129	N57°18'02\" W	42.83'
130	N57°18'02\" W	42.83'
131	N57°18'02\" W	42.83'
132	N57°18'02\" W	42.83'
133	N57°18'02\" W	42.83'
134	N57°18'02\" W	42.83'
135	N57°18'02\" W	42.83'
136	N57°18'02\" W	42.83'
137	N57°18'02\" W	42.83'
138	N57°18'02\" W	42.83'
139	N57°18'02\" W	42.83'
140	N57°18'02\" W	42.83'
141	N57°18'02\" W	42.83'
142	N57°18'02\" W	42.83'
143	N57°18'02\" W	42.83'
144	N57°18'02\" W	42.83'
145	N57°18'02\" W	42.83'
146	N57°18'02\" W	42.83'
147	N57°18'02\" W	42.83'
148	N57°18'02\" W	42.83'
149	N57°18'02\" W	42.83'
150	N57°18'02\" W	42.83'
151	N57°18'02\" W	42.83'
152	N57°18'02\" W	42.83'
153	N57°18'02\" W	42.83'
154	N57°18'02\" W	42.83'
155	N57°18'02\" W	42.83'
156	N57°18'02\" W	42.83'
157	N57°18'02\" W	42.83'
158	N57°18'02\" W	42.83'
159	N57°18'02\" W	42.83'
160	N57°18'02\" W	42.83'
161	N57°18'02\" W	42.83'
162	N57°18'02\" W	42.83'
163	N57°18'02\" W	42.83'
164	N57°18'02\" W	42.83'
165	N57°18'02\" W	42.83'
166	N57°18'02\" W	42.83'
167	N57°18'02\" W	42.83'
168	N57°18'02\" W	42.83'
169	N57°18'02\" W	42.83'
170	N57°18'02\" W	42.83'
171	N57°18'02\" W	42.83'
172	N57°18'02\" W	42.83'
173	N57°18'02\" W	42.83'
174	N57°18'02\" W	42.83'
175	N57°18'02\" W	42.83'
176	N57°18'02\" W	42.83'
177	N57°18'02\" W	42.83'
178	N57°18'02\" W	42.83'
179	N57°18'02\" W	42.83'
180	N57°18'02\" W	42.83'
181	N57°18'02\" W	42.83'
182	N57°18'02\" W	42.83'
183	N57°18'02\" W	42.83'
184	N57°18'02\" W	42.83'
185	N57°18'02\" W	42.83'
186	N57°18'02\" W	42.83'
187	N57°18'02\" W	42.83'
188	N57°18'02\" W	42.83'
189	N57°18'02\" W	42.83'
190	N57°18'02\" W	42.83'
191	N57°18'02\" W	42.83'
192	N57°18'02\" W	42.83'
193	N57°18'02\" W	42.83'
194	N57°18'02\" W	42.83'
195	N57°18'02\" W	42.83'
196	N57°18'02\" W	42.83'
197	N57°18'02\" W	42.83'
198	N57°18'02\" W	42.83'
199	N57°18'02\" W	42.83'
200	N57°18'02\" W	42.83'

